

* This text is provided for reference purposes only.

Public Notice: Ministry of Trade, Industry and Energy 2024

2024 Call for Proposal of Global Industrial Technology Cooperation Center Program

We are announcing the opening of 2024 Global Industrial Technology Cooperation Center Program as follows. This aims to establish a global industrial technology cooperation center to enhance the global innovation capabilities of Korean industry and support joint R&D with excellent overseas R&D institutions. If any organization wishes to participate, please apply in accordance with the necessary requirements and guidelines.

January 18, 2024
Minister of Trade, Industry and Energy

I Program Overview

1. Objectives

- To establish a **sustainable R&D cooperation model** between Korean companies and the world's leading R&D institutions & to **create excellent research results** with high industrial ripple effects

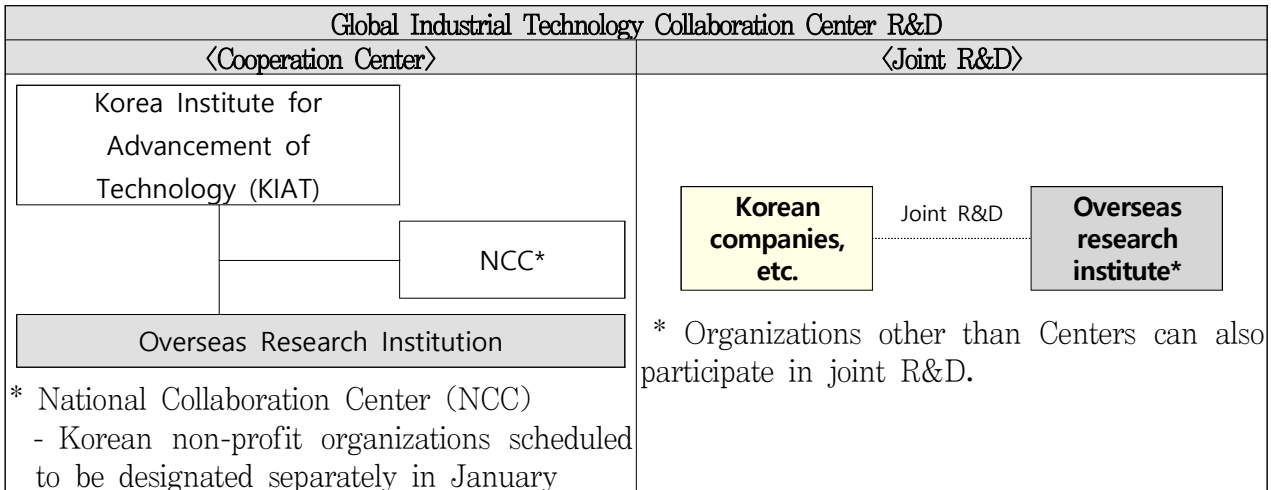
2. Overview

① **(Cooperation Center)** Designate overseas top research institutions as 『Industrial Technology Cooperation Center』, hereafter referred to as “Center,” to serve as a base for technology cooperation of Korea, thereby supporting global technological collaboration of Korean companies.

- (Main Roles) Promoting collaboration demand between Korean companies and relevant institutions, matchmaking, joint R&D project planning, and support for researchers dispatched from Korea

* (performance indicators) Number of collaboration demands, technology matching, technology exchange and planning consulting, pilot research projects, etc.

- ② **(Joint R&D)** Support for joint R&D projects of global industry-academia-research consortia, including projects pre-planned by the Center (consortia not affiliated with the center can also participate)



3. Funding Scale and Duration

Type		Funding scale	Funding Duration
Global Industrial Technology Collaboration Center	Cooperation Center	Varies depending on cooperation center model	5 year or less
	Joint R&D	Around KRW 2 billion annually per project	After completing 3 years, 2 additional years available (3+2)

- **(Cooperation Center)** Funding for establishing a (project-planning) collaboration platform

* This refers to the amount of funding for the task of overseas institutions, including the deployment of dedicated personnel (coordinator) within the institution and the provision of a dedicated office (Korean desk).

* The total amount of the funding is KRW 18 billion, which will support approximately 6 cooperation centers, and the final amount of support for each center will be determined upon agreement with KIAT.

- **(Joint R&D)** KRW 2 billion per project/year × (3+2 years)

* This refers to the amount of funding for selected joint R&D projects for 3 years.

Afterwards, if its results are proven excellent, additional funding for advancement and commercialization shall be provided (2 years)

- Notes regarding fiscal year matching principles (Not applicable to cooperation centers. Applicable only to joint R&D.)

Type	Details
Government Contribution	<p>1st year(2024) - 5/12 of the amount of funding for annual task (e.g., within KRW 825 million based on KRW 2 billion per year)</p> <p>2nd year(2025) and 3rd year(2026) - the full amount of funding for annual task(KRW 2 billion)</p> <p>4th year(2027) - 7/12 of the amount of funding for annual task (e.g., within KRW 2 billion based on KRW 2 billion per year)</p> <p>After completing 3 years, 2 additional years are available, and consequently up to KRW 10 billion of total government contribution for 5 years will be provided.</p>
Research and Development Period	<p>1st year - set to 5 months (August 2024 to December 2024).</p> <p>2nd year - Afterwards, the total research and development period is set to 12 months per year, up to 3 years (36 months) (additional support (2 years) is decided after 3 years of support)</p> <p>* Example: 2nd year '25.1~' 25.12 (12 months), 3rd year '26.1~' 26.12 (12 months), 4th year '27.1~' 27.7 (7 months)</p>

4. Eligible Applicants (Qualifications) and Fields

Type	Cooperation Center		Joint R&D
Major Institution	<p>KIAT (Agency vested with exclusive responsibility for GITCC as well)</p>		<p>Domestic companies * Domestic non-profit organizations can act on behalf of domestic companies, after securing demand from domestic companies</p> <p>[Overseas participating institution (required)] Overseas academia, research institutes and corporations * Organizations other than the Center are also eligible for participation</p> <p>[Domestic participating institute (option)] Domestic and overseas academia, research institutes and corporations</p>
Participating Institution	<p>NCC</p>		
	Designate or Select	<p>Overseas research institutes, universities, etc.</p>	
Eligible Fields	<p>Cutting-edge industries (Semiconductors, batteries, bio, future mobility, robots, displays, AI and emerging promising industries)</p>		

○ Cooperation Center

- **(Overseas participating institution)** For overseas institutions applying to the cooperation center, individual researchers should submit a proposal including a letter of intent to participate in the Center program.
- * However, if selected as an institution subject to an agreement, a written confirmation of intent to participate must be submitted in the name of the institution, and an **inter-institutional agreement must be concluded with the Korea Institute for Advancement of Technology, which is the major institution.** (If an agreement cannot be concluded, the opportunity may be passed on to the next-best institution)
- * Participating institutions designated without selection process, submission of a plan is required.

〈Basic Requirements for Global Industrial Technology Cooperation Center (overseas institution)〉

- ① Technical capabilities and willingness to pursue joint R&D projects centered on cutting-edge technology
 - * Overseas institutions must present key areas of cooperation with Korea, taking into account their own strong technology areas.
- ② Administration team or staff to assist in project planning, partner matching, and operation within a research consortium involving Korean companies
 - * (Examples) Industry-academia cooperation programs, research support administrative departments, company support functions (commercialization, etc.), etc.
- ③ Research facilities and locations that can be accessed by research personnel dispatched from Korea

- **(Major Institution)** The major institution, KIAT should select overseas participating institutions for the Global Industrial Technology Cooperation Center and form a consortium with the overseas institutions and NCC according to the key areas of the Centers.
- **(Domestic Participating Institution)** NCC, domestic participating institution, should submit a final Center plan after forming a consortium.
- * **The budget for each Center will be provided after approval of the final plan by KIAT.**
- * The cooperation center project is a task that falls under Article 64, Paragraph 2, Item 4 of the Enforcement Decree of the National Research, Development and Innovation Act and is not included in the number of government-funding R&D projects.

	KIAT (Major institution)	NCC (Domestic participating institution)	Designated or selected overseas participating institution
Roles by organization	<ol style="list-style-type: none"> 1. Support for business plan establishment 2. Comprehensive management of agreement conclusion and performance 3. Compilation of final business plan and final result report for each center 4. Review and adjust the Global Industrial Technology Cooperation Center project business plan 5. Performance management of the evaluation team, including selection evaluation and performance result evaluation 6. Performance management 	<ol style="list-style-type: none"> 1. Support Center operation and R&D collaboration of Korean companies in domestic areas 2. Submission of final business plan and final result report by center (by consortium) 3. Support in creating business plans and result reports for the Global Industrial Technology Cooperation Center 4. Support related to the project cost payment process to overseas organizations 	<ol style="list-style-type: none"> 1. Operation of a cooperation center and carrying out projects such as joint R&D project planning with domestic companies, matchmaking, and demand discovery 2. Prepare and submit business plan (English) and result report (English) for each center (by consortium) (including quantitative results) 3. Prepare final business plan and final result report by center (by consortium)

- **(Joint R&D)** Domestic companies should be a major institution of each project in principle. However, domestic non-profit organizations can act as agents* on the premise of securing demand from domestic companies.

* If a domestic non-profit organization serves as a major institution at the request of the company, the non-project organization must submit a **technology development request form** the participating company **and a commercialization plan**.

- **(Eligible fields)** Support for cutting-edge and promising technologies that can be developed into new growth engines for domestic industries **by linking with industrial source technologies** held by global research institutes.
- **(Support target)** Projects with high contribution to research and development by overseas institutions and high need for international collaboration.

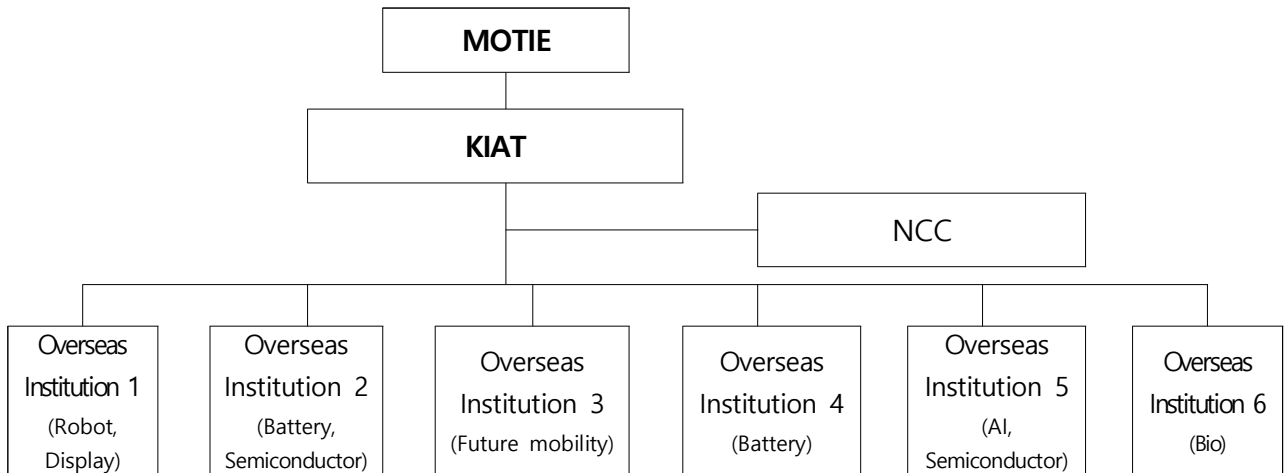
<Standards for Need for International Collaboration>

- ① When it is not possible to develop certain technology in Korea within a specified timeframe (three years)
- ② When the key original technology (IP) has already been secured by a foreign country's entity
- ③ When international cooperation has the potential to significantly reduce the development period (by more than one year) and costs (by more than 50%).
- ④ When global certification, demonstration, and the attainment of global standards are essential for penetrating and developing new markets
- ⑤ When international cooperation is required to address global challenges, such as climate change

- **(Personnel exchange)** In order to improve research performance and promote human resource exchange, priority is given to projects that require overseas dispatch of researchers from domestic companies (more than one person per project, for more than six months per year).
 - * Projects planned by the Center require domestic researchers to be dispatched to the country.
 - * Projects planned by the Center typically involve joint ownership of inventions by both the overseas institution and the domestic institution. However, even in instances where an invention is solely owned by one participating institution, other participating institutions retain the right to royalty-free licensing or a preemptive right to licensing.
 - * Korean professors or international students included as participating researchers at an overseas institution positively affect the evaluation of the project.

5. Project Organizational Structure

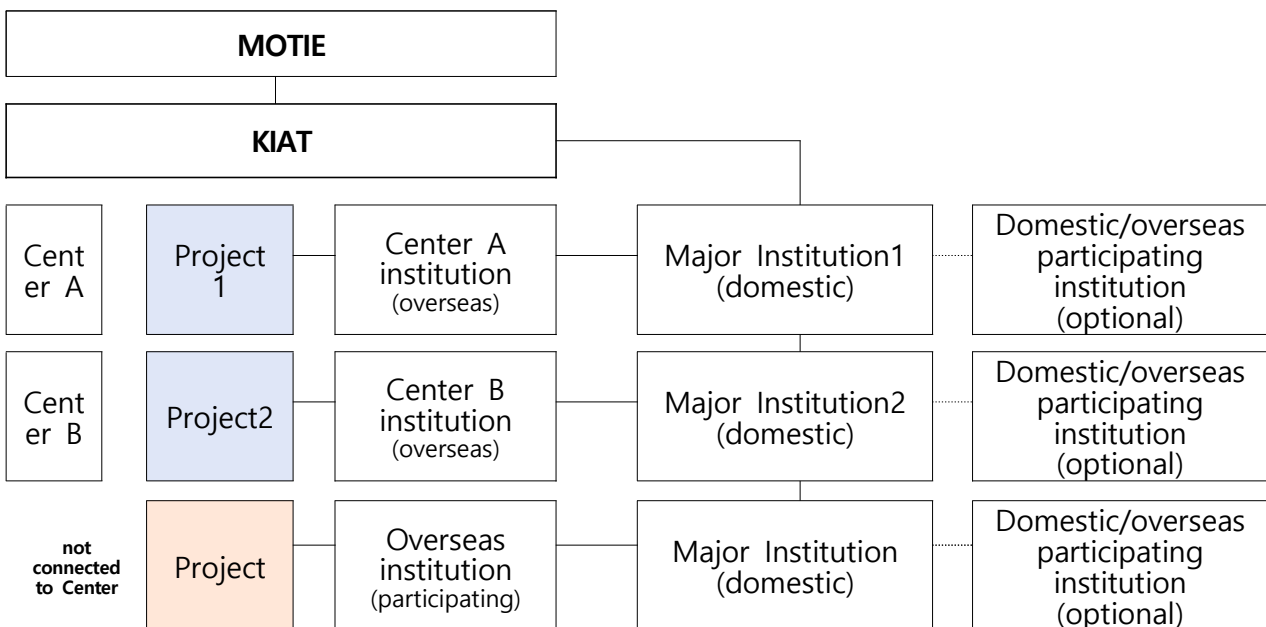
○ Cooperation Center



* The technology areas of overseas institutions are randomly presented.

What is National Collaboration Center (NCC)?
 National research institutes with function of supporting Korean corporations in technology matching, R&D project planning based on their own global network as well as technology expertise.

○ Joint R&D







* Joint R&D projects of a consortium only with a overseas participating institution which is not an institution designated as Center are applicable.

* Contribution to the Joint R&D project by overseas participating institution should be more than 40%, in principle.

6. Project Procedures and Schedule

○ Cooperation Center

Call for Proposal	January 18	www.motie.go.kr, www.kiat.or.kr, www.k-pass.kr, www.gtonline.or.kr
		
Submit Proposal	~ March 4	By e-mail (ssomie81@kiat.or.kr)
		
Evaluation for Selection of Center (overseas)	March	Agency vested with exclusive responsibility for GITCC (KIAT)
		
Selection of Center (overseas)	March	MOTIE/KIAT
		
Form Center Consortia	April	KIAT/NCC/Overseas institution
		
Sign an agreement	May	KIAT/NCC/Overseas institution

○ Joint R&D

Call for Proposal	January 18	www.motie.go.kr, www.kiat.or.kr, www.k-pass.kr, www.gtonline.or.kr
		
Submit R&D Plan	~ May.31	www.k-pass.kr
		
Evaluate R&D Plan	June to July	Agency vested with exclusive responsibility (KIAT)
		
Select Evaluate R&D Plan	July	MOTIE/KIAT
		
Sign an agreement	July	KIAT/Major and Participating institutions

7. Evaluation

○ Criteria for Cooperation Center

Criteria		Details
R&D Capability and Expertise (30)	Research and Development Achievements (10)	<ul style="list-style-type: none"> - Provide examples of technical achievements in key technology areas where collaboration with Korean industries is available (patent applications, published papers, etc.). - Total research spending - Researcher headcount
	Expertise and Status (5)	<ul style="list-style-type: none"> - Overview of the organization's operation status (e.g., international cooperation department, commercialization department, etc.).
	Collaboration and Commercialization Support (15)	<ul style="list-style-type: none"> - Examples of past collaborative research activities with companies. - Details about the corporate collaboration organization and infrastructure. - Track record in technology transfer and commercialization, including any involvement with start-ups.
Project Plan (40)	Operation Plan (25)	<ul style="list-style-type: none"> - Outline the appropriateness of the center's operation model. - Describe the reliability of center support personnel. - Provide an operational strategy to support Korean companies, including plans for researcher exchange and technology cooperation platforms. - Quantify annual goals by specifying measurable targets, such as the number of technology matches, feasibility studies, exchange events, etc.
	Willingness to Participate (10)	<ul style="list-style-type: none"> - Indicate the amount of cash or in-kind matching available when promoting the center. (optional) - Specify the availability of dedicated assistant staff, space and facilities.
	Facilities, Equipment, and Infrastructure accessible to Korean partners (5)	<ul style="list-style-type: none"> - Describe the status of research equipment and facilities available for shared use and the terms of their use.
R&D Collaboration Plan (30)	International Joint Research Planning (15)	<ul style="list-style-type: none"> - Procedure of international joint research. - Status of joint research with Korean entities. - Korean enterprises' demand for joint research with the organization
	Openness in International Joint Research (15)	<ul style="list-style-type: none"> - Details on the transferability of IP rights to Korean companies. - Conditions for IP transfer to Korean companies* (e.g., license types, expenses, royalties). - Any supports to assist in R&D collaboration and commercialization including reduction in indirect expenses (overhead costs).

○ Criteria for Joint R&D

Criteria	Details
Technology (20)	·Necessity and creativity of developed technologies ·Feasibility of technology development plans ·Appropriateness and feasibility of development targets
Research Performance (20)	·Status of R&D team capacity and infrastructure ·Capacity and roles of overseas institutions
International Joint Cooperation Strategy (30)	·Necessity and effectiveness of international cooperation ① When it is not possible to develop certain technology in Korea within a specified timeframe (three years) ② When the key original technology (IP) has already been secured by a foreign country' s entity ③ When international cooperation has the potential to significantly reduce the development period (by more than one year) and costs (by more than 50%). ④ When global certification, demonstration, and the attainment of global standards are essential for penetrating and developing new markets ⑤ When international cooperation is required to address global challenges, such as climate change ·Detailedness and validity of international cooperation strategies ·Conformity with industrial technology technologies and expected effects of policies
Marketability (30)	·Potential of commercialization and ripple effects ·Suitability of plans to secure and use intellectual property rights

II

Application and Submission

1. How to Apply

- Issue forms & application notice: Refer to **【Attached 1 - 3】** KIAT and Project Management System (www.kiat.or.kr, www.k-pass.kr) and GT Online (www.gtonline.or.kr)
- All documents including proposal, plan and other attachments must be submitted online (Not necessary to submit offline)

2. Documents for Submission

○ Cooperation Center

No.	Document Name	Submission Institution	Notes
1	GITCC Proposal (in English)	Overseas participating institution	- Use the [Attached] forms(Proposal Application Form)
2	Letter of intention to participate by the head of the overseas participating institution	Overseas participating institution	- Use the [Attached] forms - Submit a sheet of seals of all applicants
3	GITCC Plan (in Korean)	Domestic participating institution	- Use the [Attached] forms - Submitted for agreement with KIAT after forming Center consortium including selected overseas participating institution

○ Joint R&D

No.	Document Name	Required to Overseas Institutions	Submission Institution	Notes
1	R&D Plan (in Korean)	-	the major R&D institution as a representative	- Submitted by the main R&D institution as a representative - Use the [Attached] forms
2	R&D Plan (a brief version in English)	◎	the major R&D institution as a representative	- Submitted by the main R&D institution as a representative - Use the [Attached] forms - English summary including main contents of the R&D plan in Korean
3	Agreement between domestic and overseas R&D institutions	◎	the major R&D institution as a representative	- Submitted by the main R&D institution as a representative - An MOU between the main R&D institution and domestic/overseas R&D institutions, LOI or English R&D Plan with the signature of the head of domestic/overseas R&D institutions
4	Business registration certificate of domestic implementing agency	-	for-profit organizations (major + domestic participating institutions)	- Submitted by all for-profit organizations /enterprises (non-profit is exempted)
5	Letter of intention to participate by the head of the domestic participating institution	-	major + domestic participating institutions	- Use the [Attached] forms - Submit a sheet of seals of all applicants or separately for each institution
6	Letter of intention to participate by the head of the overseas participating institution	◎	overseas participating institutions	- Use the [Attached] forms - Submit a sheet of seals of all applicants or separately for each institution
7	Consent to Provision and	-	major +	- Use the [Attached] forms

No.	Document Name	Required to Overseas Institutions	Submission Institution	Notes
	Utilization of Personal and Tax Information of Participating Researchers and Integrity Security Pledge		domestic participating institutions	- Signatures of all participating researchers
8	Certificate of R&D Institution-affiliated Research Institutes	-	For-profit institutions (major + domestic participating institutions)	- Submitted by all for-profit organizations /enterprises * Issued by KITIA * “Research Specialized Department” is not acceptable
9	Proof of Employment of the Person in Charge of the major and participating institution	◎	all major + participating institutions	
10	Confirmation of Eligibility for Application by R&D institution	-	major + domestic participating institutions	- Use the [Attached] forms
11	Application for in-kind allocation of technology purchase	-	Only if applicable (major + domestic participating institutions)	- Use the [Attached] forms (submitted with relevant verification documents)
12	Audit report or financial statement of R&D institution	-	For-profit institutions (major + domestic participating institutions)	- all domestic for-profit organizations/companies submit (non-profit organizations excluded) - A scanned PDF file of the cover page (including the seal of the accountant), financial statements (standard balance sheets), and income statement (standard income statement) * A standard balance sheet issued by the National Tax Service does not require the seal of an accountant * Non-profit and listed (exchange, KOSDAQ) companies are exempt from submission. Other companies must submit relevant documents (data on the settlement of accounts for the last three years and if the settlement of accounts for the previous year has not been completed, settlement data for the last three years from the previous year should be submitted)
13	Credit survey reports or accounting audit reports of overseas global demand companies and joint R&D institutions	If applicable	companies or for-profit corporations among overseas global demand companies and	- D&B Business Information Report (BIR)*, Korea Trade Insurance Corporation’s Credit Survey on Foreign Companies, or Audit Reports of the previous year * D&B BIR(Business Info. Report)

No.	Document Name	Required to Overseas Institutions	Submission Institution	Notes
			overseas joint R&D institutions	<p>issuance is free of charge for up to two reports (2 overseas company or for-profit corporation reports) per applying project (consortium) (However, it's limited to reports from overseas participating R&D institutions that have completed application for projects)</p> <p>* D&B BIR Request: NIICE D&B Data Intelligence(DI) Office, 02-2122-2342, 2515 (09:00~18:00) (Necessary to mention that the report is for the purpose of submission to KIAT. Necessary to request in advance, as it takes at least one week to issue)</p> <p>** D&B Report and Korea Trade Insurance Corporation Report must be effective as of the deadline to be accepted</p>

3. Contact

○ International Cooperation Center, KIAT

- Joo Suk (Jason) Kang, Director, +82-2-6009-3740

- Somi Yoon, Senior Researcher, +82-2-6009-3741, ssomie81@kiat.or.kr